



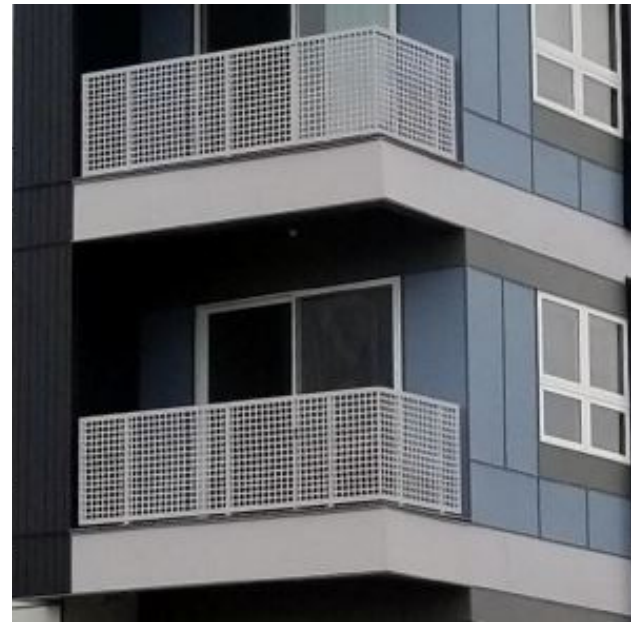
ASTRO METAL CRAFT

STELLAR  CRAFT™

763-777-8087  
stellarcraftmetals.com



# STELLAR BALCONY SYSTEM



These aluminum balcony systems create a division of space for privacy, while still providing translucence. In addition to regulating shade and visibility, perforated panels offer a modern aesthetic tone.

## CONTACT US

[stellarcraftmetals.com](http://stellarcraftmetals.com)

763-777-8087

[sales@stellarcraftmetals.com](mailto:sales@stellarcraftmetals.com)



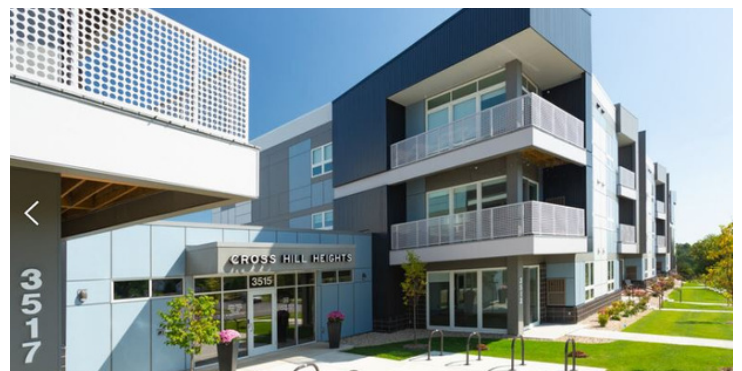
## STANDARDS AND CODES

- International Building Code, 2012 ed.
- Minnesota State Building Code, 2015 ed.
- The Society for Protective Coatings
- The Aluminum Association, Inc.
- American Architectural Manufacturers Association
- American Society for Testing & Materials
- American Welding Society
- Americans with Disabilities Act Accessibility Guidelines

## STRUCTURAL PERFORMANCE

Top of Guards: Uniform load of 50 lbf/ft. applied in any direction. Concentration load of 200 lbf applied in any direction. Uniform and concentration loads need to not be assumed to act concurrently. Infill of Guards: Concentrated load of 50 lbf applied horizontally on an area of 1 sq. ft. Infill load and other loads need not be assumed to act concurrently

Balcony systems comply with IBC structural strength and dimensions requirements



## CONTACT US



# PRODUCT DESCRIPTION

## GENERAL

### WORK INCLUDED:

Provide aluminum balcony and railing per approved drawings.

- Prefabricated aluminum balcony and rail
- Mounting components and accessories
- Mechanical fasteners

### SUBMITTALS:

- Material description and installation instructions.
- Shop Drawings
- Samples for Initial Selection

### QUALITY ASSURANCE:

- Comply with Standards and Codes listed in Article 1.02 REFERENCES.
- Welding Qualifications: Qualify procedures and personnel according to AWS D1.2/D1.2M, for aluminum.

### WARRANTY:

See manufacturer's warranty for specific details

### DELIVERY, STORAGE, AND HANDLING.

Deliver materials to the job site in good condition. Purchaser to store in clean, dry location properly protected against damage to finished surfaces. Store away from uncured concrete, masonry, or stucco.



## PRODUCTS

### MATERIALS:

- Extrusion Alloy: 6061-T6 Series
- Perforated Panel Alloy 5052
- Screws, bolts, washers, hardware shall be stainless Steel or other corrosion resistant material.

### FINISHES:

- High performance finish

### FRAME COMPONENTS:

SPECIFIER: Perforations, including distance between perforations (NOT less than the thickness of the aluminum plate). NOT more than 10 different sizes and shapes of perforations are allowed. MAXIMUM size of any perforation cannot exceed 2 1/2 in.

- Aluminum Tube Posts: 6061 alloy, 0.250-in. wall thickness.
- Aluminum Horizontals: 6061 alloy; 0.125-in. thick.
- Exposed Fasteners: Button head screws or bolts, consistent with design.
- Welding Electrodes: Comply with AWS requirements in D1.1 and D1.2.
- Fasteners, Anchors & Inserts: 304 stainless

## EXECUTION

### PROJECT CONDITIONS:

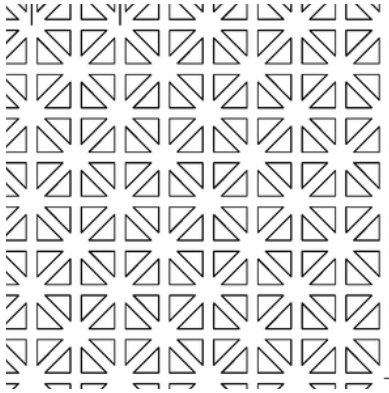
- Verify locations of walls and other construction contiguous with metal fabrications by field measurements.
- Indicate field measurements on final shop drawings.
- Where field measurements cannot be made without delaying the Work, guarantee dimensions and proceed with fabrication of products without field measurements.
- Coordinate construction with other trades to ensure that actual dimensions correspond to guaranteed dimensions

### INSTALLATION:

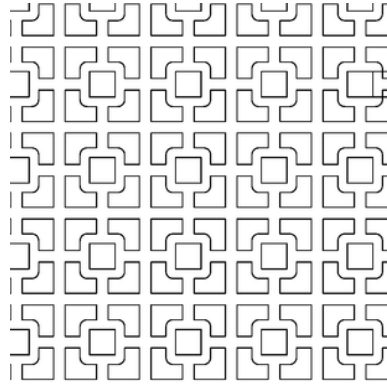
Install work in accordance with manufacturer's instructions



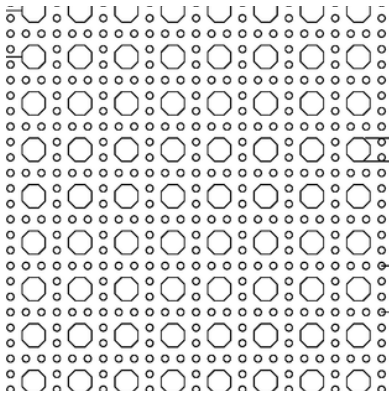
# DESIGN OPTION EXAMPLES



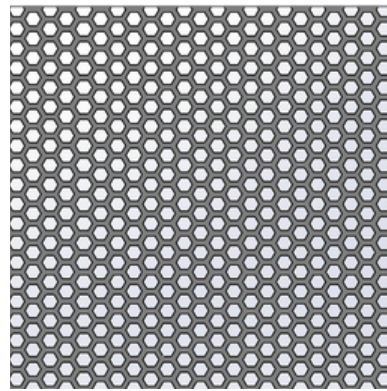
**WINDMILL**



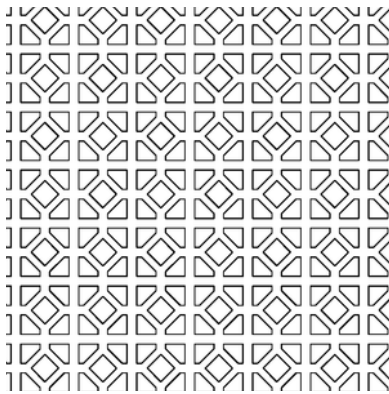
**GARDEN PARTY**



**OCTIDOT**



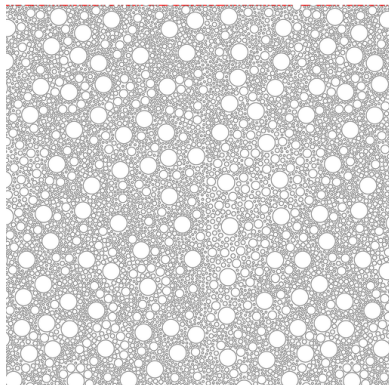
**HONEYCOMB**



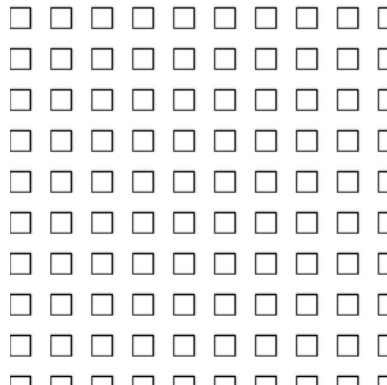
**ROMAN**



**CIRCLE**



**COSMIC**



**SQUARE**

**MORE CUSTOM DESIGNS AVAILABLE UPON REQUEST**