

# ASTRO

## METAL CRAFT

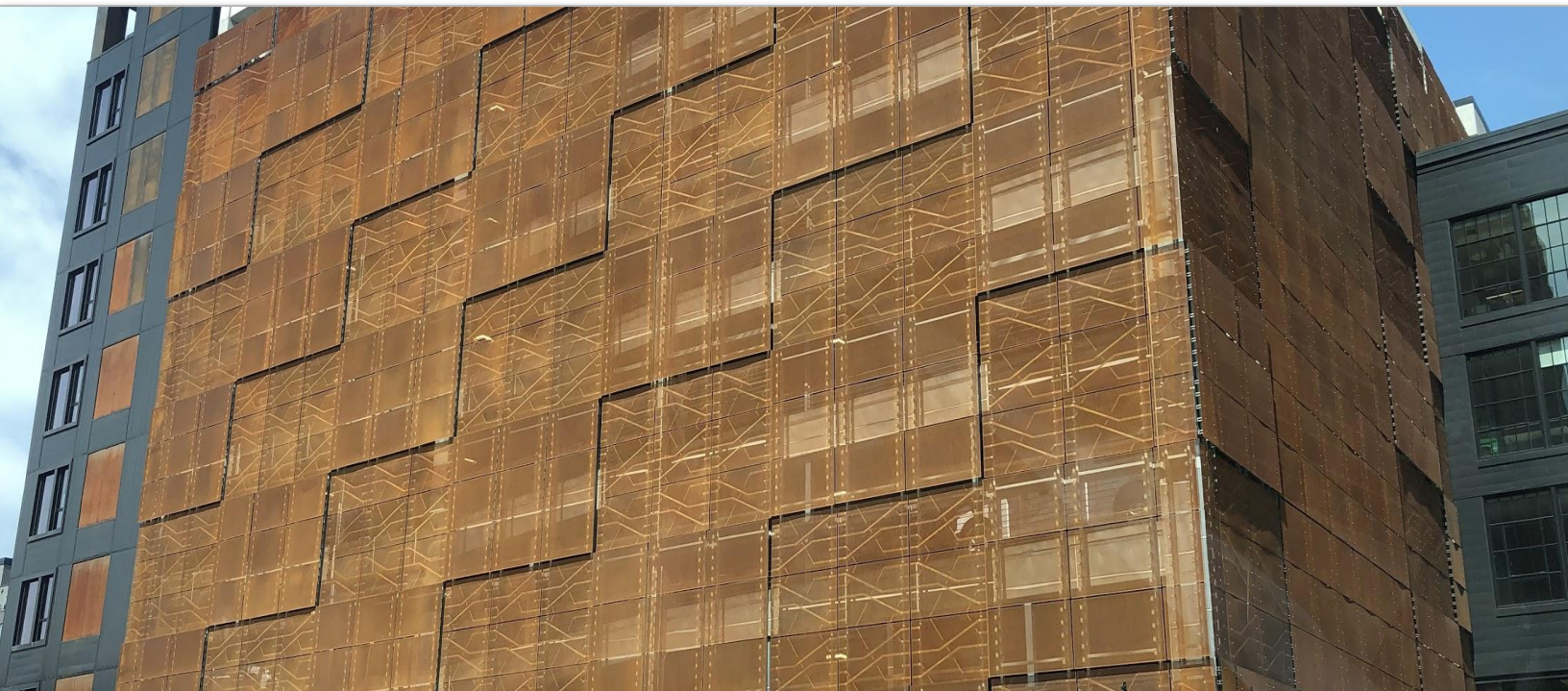
## STELLAR CRAFT™

Architectural Metal Products by Astro!

Formerly known as Astro Engineering & Manufacturing, Inc., Astro Metal Craft is your reliable manufacturer of **architectural and industrial metal solutions**.

- Single source manufacturer for custom metal fabrication products
- Experts in stainless steel and aluminum fabrication
- Technical consultation and value engineering
- 3D drafting and fabrication, all completed in-house
- MNDoT certified quality control program
- Certified welders, conforming to AWS standards
- Proven ability to meet challenging and changing delivery schedules
- 5-Star customer service awards, five years running
- Certified as DBE, WBE, SBE, TGB and CERT (MN)

**WE ARE A RELIABLE SUPPLIER OF QUALITY METAL FABRICATIONS FOR OVER 30 YEARS!**



## WE MAKE METAL PERFORM!

## ASTRO'S ON-SITE EQUIPMENT

The variety and mix of equipment at Astro gives us the ability to fabricate a wide variety of metal parts and equipment, all on-site. Our employees have the skills and knowledge to assemble and operate our machinery with a sharp focus on quality. With a CWI on-site, our accurate and quality welds allow us to get parts done correctly and efficiently.

At Astro Metal Craft, our commitment to quality and efficiency is demonstrated in every project, start to finish.

### PUNCHING (CNC)

- TruPunch 5000
- TruPunch 3000
- Wide range of tooling
- Punches through thickness of ¼"
- 5' x 10' (longer with reposition)
- Regular and irregular patterns

### LASER CUTTING (CNC)

- Cincinnati 4000 Watt (6 x 12)
- Mazak STX 510 HiPro 2500 watt
- 1" Carbon Steel
- 1/2" Stainless Steel
- 3/8" Aluminum

### FORMING

- (CNC) Cincinnati 350 ton, 12' wide
- (NC) Cincinnati 225 ton, 12' wide
- (CNC) Cincinnati 90 ton 10' wide

### MACHINING (CNC)

- Haas VF4 vertical machining center
- Bed travel 50 x 20 x 25
- LeBlond Lathe
- Bridgeport Milling Machines

### WELDING

- Certified Welding: TIG, MIG
- Miller Dynasties
- Miller 350P's
- Fronius MIG Welders
- Spot Welders (resistance welding)

### DRAFTING / DETAILING

- SolidWorks 3D design
- Tekla BIM (compatible with Revit)
- CAM: Radan, BobCAD

### OTHER EQUIPMENT

- Ercolina EB76 Tube Bender
- Straight Lining Equipment
- Marvel Automatic Mitring Vertical Bandsaw
- 5' Power Slip Roller
- Scotchman Cold Saw
- Cincinnati Shear (Cuts 12', up to ¼" thick)

# ASTRO

# METAL CRAFT